



Your Roof. For Life.™

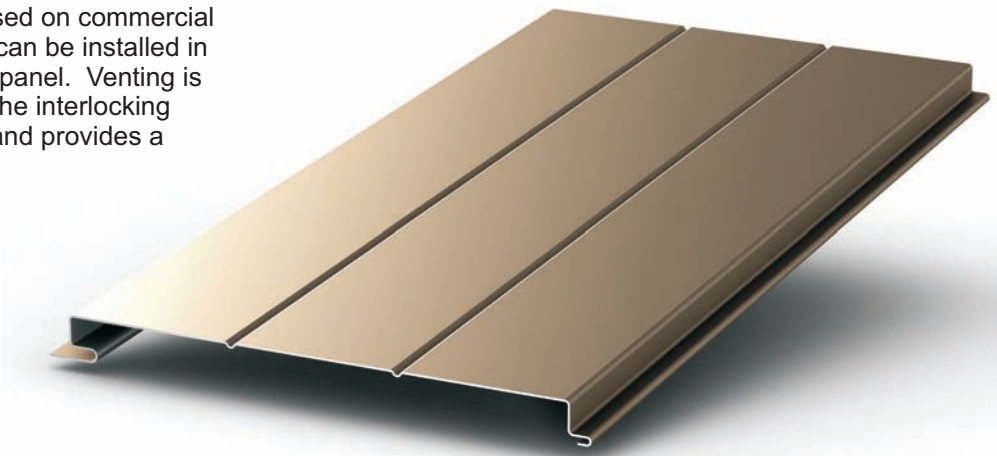
FL100 Soffit & Wall Panel

Description

FL100 is a versatile panel that can be used on commercial and residential applications. The panel can be installed in a soffit application or vertically as a wall panel. Venting is available when used as a soffit panel. The interlocking mechanism allows for rapid installation and provides a flush appearance.

Application

Product can be applied to open framing (up to 2'-0" on center) or solid substrate

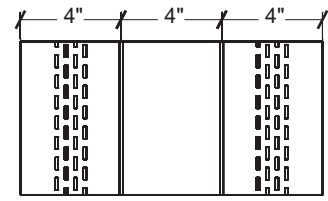
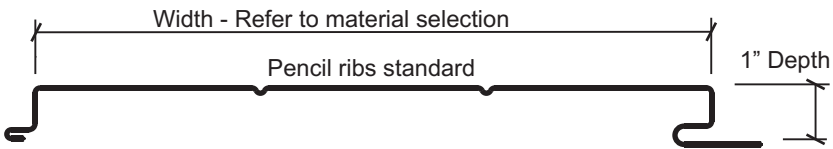


Material

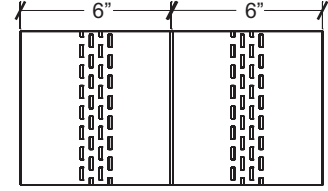
- 24 gauge AZ-50 Galvalume® steel with Kynar 500® finish
- 22 gauge AZ-50 Galvalume® steel with Kynar 500® finish (minimum quantities apply)
- 26 gauge AZ-50 Galvalume steel with SMP finish
- 0.032" Aluminum (minimum quantities apply)

Widths

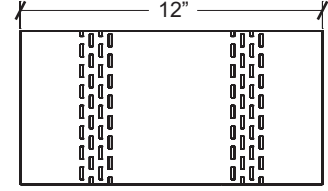
- 12" standard
- Custom widths available. Please inquire.



2 Vent rows w/ 2 pencil ribs (standard)



2 Vent rows w/ 1 pencil rib



2 Vent rows (no pencil ribs)

Vented profile options

Finishes

- Bare Galvalume® (with protective clear acrylic coating)
- PVDF Fluoropolymer (Kynar 500®) finish for 24 gauge, 22 gauge, and 0.032" aluminum
- SMP (Siliconized Modified Polyester) finish for 26 gauge

Profile Choices

- 2 pencil ribs, 1 pencil rib, or flat profile.
- 2 rows of perforations for vented applications

Venting

- Net free vent area for vented profile is 6.0 square inches per square foot.



UCC does not recommend application of the vented steel profile in coastal (marine) regions or high humidity environments due to possible corrosion on edges of raw steel.

Oil canning: Union Corrugating Company purchases prime commercial grade light gauge metal which is manufactured to all industry accepted tolerances. "Oil canning" is an inherent part of light gauge cold formed panels and is not cause for rejection.